

3610

FREE

MURCHISON COMMUNITY NEWSLETTER



A TOWN UNITED – A QUICK NOTE FROM NHM

It's been a difficult couple of weeks for many members of the Murchison and District community and our hearts go out to all who've been impacted by the flood event. At the same time, the enormous amount of hard-work, compassion, energy, community spirit and care that this glorious town has demonstrated in difficult times has been incredible to see and something we should all be proud of. From the team at Neighbourhood House Murchison, thank you to everyone for everything you've done and continue to do. Together we can achieve anything.

Hello Murchison!

We are hoping to open on time, unfortunately it's up to the river as we cannot empty and clean the pool until the water goes down.

Sponsorships this year

All current sponsors on the sponsorship board will not be receiving an invoice this year. This year is on us!! I think the community has had more than enough to deal with.

Sponsorships are still available for businesses that are in a position to join the board. Cost \$100.00 per year for your business name to be added.



MURCHISON
Swimming Pool Inc.



MURCHISON RSL SUB-BRANCH INVITES YOU TO REMEMBRANCE DAY 2022

Remembrance Day is a day of memorial observed all around the world, on November 11th. The official end of World War I was set for the 11th hour, of the 11th day, of the 11th month (11:00 am, November 11th).

Since the end of World War I, we have looked at November 11th as a day to remember those who fought for our country, to protect us and our freedom. It is a day for us to observe and show our gratitude for those who risked and ultimately gave their lives for us.

So, what is the significance of the Poppy? Poppies were a common sight in WWI, especially on the Western Front. They flourished in the soil churned up by the fighting and shelling. American humanitarian Moina Michael wrote "and now the Torch and Poppy red, we wear in honour of our dead". She campaigned to make the poppy a symbol of remembrance for those who had died in the war. The poppy was also the inspiration for John McCrae's poem In Flanders Fields.

We ask the community to join us at 10.30am on 11th November at the Cenotaph on Stevenson St, to honour the sons of Murchison and all who served our country. We remember them and their families, as well as those serving now and in previous conflicts.

The Murchison RSL will be selling Poppies and Pins as part of the 'Poppy Appeal' in the lead up to Remembrance Day starting on the 1st November 8.30am - 12 noon outside Supa Value and on certain days at The Railway Hotel, Murchison East. So grab a poppy or pin or just say hello to our volunteers, a smiling face, a wave or quick chat makes our day as much as a donation or sale.

All funds raised are used to support veterans with 50% used to support local veterans & their families and 50% for veterans throughout Victoria.

Many thanks to all community groups and many individuals that provide ongoing support, the recent flooding highlighted just how great that community spirit is. If you feel inclined to get involved and volunteer, or you are a veteran in need of assistance please email us at murchrsl@outlook.com.

We look forward to seeing you in the lead up to and on Remembrance Day.



3610 MURCHISON COMMUNITY NEWSLETTER IS A PROGRAM OF NEIGHBOURHOOD HOUSE MURCHISON (VIC) INC.

Articles are due no later than the 17th of each month.

Publication will be the last week of each month.

Please email your article to 3610ourplace@gmail.com
Subject line: Your Name/Organisation name and month of edition.

- All articles are subject to publisher and Management approval.
- Please submit in a Word document.
- Please submit Images as jpeg.
- Articles published are neither in favour or not in favour of politics.
- All articles must be submitted by the monthly deadline to be included in the next edition.

Rates and Guide for submission.

- Community group/ Not-for-profit Organisation Local Area rates:
Up to full page: Free
- Not-for-profit organisations from non-local area welcome. Space may be limited.
- Frontpage will be shared on a monthly basis between local Community organisations.
- For further details contact the Manager of the House
- at 3610ourplace@gmail.com

Commercial Rates:

- Full Page: \$100
- 1/2 Page: \$50
- 1/4: \$30
- 1/8 (business card): \$15
- Annual Sponsorship - Business card size. \$250 for 12 editions.
- Annual sponsorship also includes 1 x half page article per annum with photos. For further details Contact Katrina Campbell at 3610ourplace@gmail.com

Neighbourhood House Murchison
23 Impey Street Murchison VIC 3610

P: 03 5826 2373

E: info@murchison.org.au
murchison.org.au

Opening hours; 9am to 3pm Monday to Friday (excluding Thursday).



Notice of Annual General Meeting

To all members and prospective members

The Committee of Management for
Neighbourhood House Murchison (VIC) Inc.
will be holding their AGM
on **Wednesday, 9th November 2022 at 7pm**
at The Neighbourhood House

23 Impey Street Murchison

Contact Louis on **5826 2373** or
at manager@murchison.org.au to become a
member or to find out more



St Vincent de Paul Society
good works

Assistance is available

Every Friday from 2 - 3pm

At the Neighbourhood House

Neighbourhood House Murchison

23 Impey Street

03 5826 2373
info@murchison.org.au



OUR RIVER IN FLOOD



The river has always been an important reason for habitation in the area both by our indigenous first occupants and those who came in the 1840's to establish the Goulburn Aboriginal Protectorate. The local clan, the Ngurai-illum Wurrung people, called the river Wahrung.

Over the years as settlements grew and Murchison became established, the town was a vital crossing place as the steep banks limited sites where travellers could cross. Firstly, a punt then a timber bridge, followed by the current steel span bridge made access easy to those wanting to travel both locally and in modern times move from one side of the state to the other.

Records about the river tell us that it has certainly had it's 'ups and downs'. After witnessing the massive amount of water flowing down stream, overflowing the northern bank and flooding areas to the east of our town during this latest flood, it is hard to comprehend that in 1866 after 10 months of no rain, the river was described as 'a string of waterholes'!

Then in 1870, the worst flood known to white settlers since establishment of the town in 1854 had a major impact. Amongst other damage, it disrupted the building of the first timber bridge over the Goulburn River at Murchison for nearly 12 months. Toolamba Run Homestead, owned by James Winter and situated close to the river, was completely washed away. Due to this, he chose a high sandhill some distance away from the river for the site of Dhurringile Mansion. The construction of the Goulburn Weir was delayed by the flood of 1889 and caused a costly overrun of expenses. There were losses for the farmers of crops and livestock.

But the flood of 1916 was even worse. The rain came down for 48 hours and measured 7 inches (175mm) at Murchison, but the same rain event dropped 13 inches (325mm) at Yea so the Goulburn burst its banks in Murchison and there were boats in most streets as people and possessions were rescued from their houses. This flood still holds the local record when the river rose to 12.22m.

In living memory, the notable floods in our region of 1950's, 1960's, 1974, 1990's and 2010 and the effects on properties and businesses are still talked about.

This current flood in October 2022 has again caused heartbreak and damage to properties and businesses in Murchison, rising to 12.03m around midnight on Saturday 15th October, with the river flowing over its banks to the east of the town on both sides of the river. The community working together to minimise further damage in the town was heart-warming. The efforts of residents and total strangers, SES, CFA, Police, Shepparton Council staff and Australian Defence Force filling sandbags, building 'the great wall of Murchison', and pumping water away that had flowed into Stevenson Street from storm water drains, was outstanding.

Residents met regularly on the viewing platform near the bridge to watch the level of the river rising and see the level measured on the Flood Marker - not as accurate as the Bureau of Meteorology data but gave a very good indication of how rapidly the water rose. The speed of the current, the noise of its flow and the sheer volume and spread of the water over the opposite bank were very impressive. We feel for the plight of the people living in areas to our north that are suffering the effects of the power of the Goulburn and other rivers in flood.

Kay Ball, Murchison & District Historical Society Inc.

SUPPORT YOUR LOCAL BUSINESSES

soak!

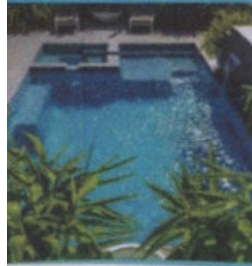
BEAUTY, SKIN & HOMEWARES,
Ladieswear

137 Hogan Street, Tatura, 3616

Follow Us & Book Online

 soak beauty  soakbeautyhomewares  sambarandfallow

GV UNIQUE POOLS



14 Future Ct, Shepparton

gvuniqueoutdoors.com.au

gvuniqueoutdoors@iinet.net.au

Darren 0447 777 939



MICK PAYTEN

03 5824 1077
105 Ross St
Tatura, Vic

WATERWHEEL 
TYRE CENTRE

Email: WaterwheelTyres@gmail.com

Murchison Bakery

& TEAROOMS

39 Stevenson Street
Murchison Vic 3610

OPEN 7 DAYS
(03) 5826 2336



RAILWAY
HOTEL
MURCHISON EAST



Find us on fb.

03 5826 2552

open 7 days

 **GV Community Energy**

Solar PV systems for
Domestic, Business and Commercial

Ph: (03) 58262513

email: info@gvce.com.au

www.gvce.com.au



4895 Goulburn Valley Highway
Murchison East
P.O. Box 64, VIC, 3610

MILOS & PERSIDA VUKCEVIC

Phone: 5826 2267

FUELS • OILS • AUTO GAS • TYRES

Shellcard, Fleetcard & Eftpos available



www.avonleafflowers.com.au

SUPPORT YOUR LOCAL BUSINESSES



**TOTAL
TREE & STUMP
REMOVAL**

- TREE REMOVALS • TREE PRUNING •
- STUMP GRINDING •
- 24/7 EMERGENCY TREE CARE •

0457 283 085

JAKE CARRICK
totaltreestumpremoval@gmail.com



murchison
LONGLEAT ESTATE

Longleat Wines
105 Old Weir Rd Murchison
Open Sat/Sun 10-5
Wine—coffee/cake—meals
Bookings: 0421602520 Email: info@murchisonwines.com.au
murchisonwines.com.au



aquariumschool.com



**MURCHISON
SERVICE STATION**

SERVICING
WHEEL
ALIGNMENTS
TYRES
ROADWORTHYS
5826 2443

ICE

MEMBER
V.V.C.C.

25 Stevenson St
Murchison
03 5826 2443

**NORTHERN VICTORIAN
PARTY HIRE**

QUALITY STRUCTURE MARQUEE AND EQUIPMENT HIRE

03 5826 2533
0404 568 544

www.nvph.com.au
nvph@hotmail.com



**MURCHISON
COMMUNITY MEALS**

Share a meal with other
members of your community
Everyone is welcome. All ages.
Mon and Wed 12.00 noon
2 Course Lunch

\$5

RECREATION TRAILS UPDATE

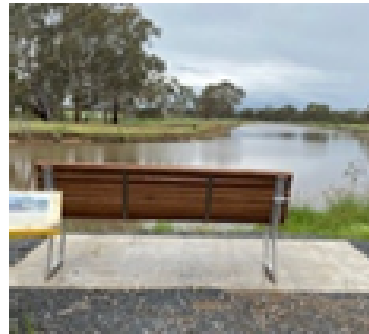
There is some promising activity going on for those who are interested in walking and riding trails around Murchison.

THE MURCHISON RAIL TRAIL – GOOD NEWS!

Great news! Hey dog walkers and exercisers, three new seats and a table with bench seats have been installed along the Murchison Rail Trail. A water hydration station (for people and dogs) has also been requested. These improvements will make the trail more welcoming and usable to everyone, and have been installed thanks to Shepparton Council and the Murchison Community Planning Group.



A wheelchair friendly table and bench seats has been installed near the Cassidy Road turn off.



One of the seats is located next to the Stuart-Murray Channel, a popular fishing spot, with great views.

RUSHWORTH TO MURCHISON TRAIL

A 'Cycling Without Age' - Waranga chapter has been formed. Cycling Without Age is a global not-for-profit charity that provides a community service by connecting those no longer able to ride for themselves with their community, and the outdoors by giving them free rides on Trishaw e-bikes, piloted by volunteer cyclists (Pilots).

Rushworth Events has successfully auspiced a grant from Parks Victoria's Innovative Volunteering Fund, and is purchasing a Triobike for use on the Murchison, then when developed, Rushworth sections of the Rail Trail.

As 'Cycling Without Age' organisers said: "Such a simple thing as a trishaw ride can really make a dramatic difference to people's lives".

"The rewards are huge when you can see the difference your pedalling can make to a person's day."



Cycling Without Age involves taking elderly or disabled passengers for leisurely trips.

RECREATION TRAILS UPDATE CONTINUED

MURCHISON TO SHEPPARTON- GOULBURN RIVER TRAIL

Finally, a group called GV Trails is seeking to have the existing trail that runs North out of Murchison extended to create a multi-use walking and riding trail that will connect Murchison, Toolamba, Tatura, Mooroopna and Shepparton. Potentially this could eventually link to existing, long trails such as the Great Victorian Rail Trail, providing a continuous route for hiking, horse and bike riding tours.

Shepparton Council is commissioning detailed track designs and feasibility studies. If you are potentially interested in being involved, or would like further information on this project, please contact megan.hill54@yahoo.com.au

Likely usage of the trail

The proposed trail has been benchmarked against similar trails in Victoria. It is estimated that **10,317 people** will use the trail annually, creating **2 additional jobs** and returning **economic benefits of approximately \$233,000 annually**.



4,137

Estimate of local people in the catchment likely to use the trail each year (10% of trail users in GSCC)



6,180

Estimate of visitors who will use the trail each year (10% of potential nature-based visitors to GSCC who are interested in bushwalking)



10,317

Total number of estimated trail users annually



\$233,495

per annum
Estimated economic impact of trails to the region - conservative figure



2

Full time jobs
Estimated number of jobs created



MURCHISON PRIMARY SCHOOL BE THE BEST YOU CAN BE!



Gates open new chapter in school's rich history

Former students, staff and families returning to celebrate Murchison Primary's 150th anniversary might do a double-take on entering the old school yard.

GATES OPEN NEW CHAPTER IN SCHOOL'S RICH HISTORY CONTINUED

The school has faithfully reproduced its famed World War II Memorial Gates to create a second memorial entry – this one dedicated to youth in the region who served Australia in World War I.

Both sets of gates are impressive in size, design and detail and are obviously built to last. The original Impey St entry gates were erected in 1949 – just four years after World War II ended – and feature fine stone masonry walls, ornate ironwork and inset, marble tablets bearing the names of servicemen in gold leaf.

These older gates lead to the historic Impey St schoolhouse, built in 1906 and still in use. The new gates now appropriately lead to the school's more modern front entry building. They have been faithfully reproduced to match the original in every way.

"This has been a School Council project made possible with a \$10,000 grant from the Department of Veteran Affairs," Murchison Primary Principal Karen Goodwin said.

"The actual cost to rebuild these gates was much higher but we had some goodwill along the way." That "goodwill" came from some historic school connections and talented locals.

Karen said when it came time to choose a stonemason, a familiar name was recommended – Webb Stonework, specialists in building custom structures from such materials as granite, sandstone, slate and limestone.

"It also just so happened I taught Jason Webb at Rushworth, so that was a nice touch," Karen said.

Jason said his business enjoyed the challenges and historic importance of the project.

"I understand the original gate was designed by a bricklayer who has passed on but apparently he had sourced the stone locally," Jason said.

"We found a good match between Murchison and Nagambie and chose stone that will weather nicely to match the original in years to come."

Meanwhile, the school turned to one of its skilled parents to reproduce the ironwork fencing.

Pete Cantlin has had four children attend Murchison Primary over the years and has a long history as the head handyman at the former Wanganui Park Secondary College. He now heads the maintenance team at the new Greater Shepparton Secondary College and reproduced the intricate metal feature fencing in his spare time.

"Pete saved us thousands of dollars with the project, thanks to his talent in working with metal," Karen said.

"Before we began this project the main entrance to our school was a horrible old farm gate. Now we have two very special entrances that our community, including the Murchison RSL sub-branch, can be really proud of.

"Some of the names on the memorial gates directly link to local families, including several students of today," Karen said.

The gates would have been a central feature of a fete planned for 5 November that was being billed as "150 + 1", marking the school's official opening in November 1871. The "+ 1" accounts for the celebrations being delayed last year due to COVID-19 restrictions.

Due to the flooding, the 150 + 1 celebration has again been postponed. Updates will feature on the school's website: www.murchps.vic.edu.au and Facebook Page

More information or to arrange interview:

Karen Goodwin, Murchison Primary School Principal, 5826 2391

MURCHISON BOWLS CLUB

Parts of Murchison were under emergency evacuation orders. We were told floods were heading our way. Kirwans Bridge was already going under water and the main bridge in Murchison was closing at 3pm.

Late in the afternoon bowls members were at the club in the center of town. Bowls club was not in any danger of becoming flooded. As time went on more and more people from the community started to arrive at the bowls club.

Quick thinking by our members popping home to grab some food and our kitchen manager who always has spare food at the club (just in case) , we started to cook up some food. Passing food out to all that were there.

Before we left the bowls club that night, we decided to meet back at the club the next day at 12 noon, we will just keep cooking food each day as long as people keep walking in the gate. Power being cut off to the town and no mobile service available put a few bumps in the rd and made communication a bit of a challenge.

Between our members awesome cooking abilities and ability to adapt quickly, Murchison Bowls Club made it happen. It was amazing to be able to provide a safe place for people to come, socialize and be able to have hot food for lunch. Some much needed time out and a sense of normality.

Walking the streets of Murchison there was no normal, absolutely devastating for so many people. Everyone donated what they could, members bought supplies. As word got out businesses supported us where they could. It has been a pleasure to help the community and our own members.

Murchison Bowls Club would like to say a big thank you to our amazing members that were able to make this happen.

Barefoot bowls and BBQ will continue again on Thursdays at 4pm, weather dependent. \$10.00 for meals, children free

Rachel Puts Secretary of Murchison Bowls Club



Also... a big thank you to Greater Shepparton Connected Community and Bendigo Bank!

Murchison Bowls club were successful in a grant application to purchase 10 sets of new training bowls for our club.

WHY HAVE I BEEN GIVEN THIS NOTICE?

IT IS CURRENTLY AGAINST THE LAW TO RIDE AN E-SCOOTER OR E-SKATEBOARD

The law is clear, you can buy one but you can't ride it on any Victorian public road, cycle lane or footpath. The only place an e-scooter / e-skateboard can legally be used is on private land.

WHY IS THIS?

E-scooters that are over 200 watts or can travel at more than 10km/h, and e-skateboards that are used on public roads are classified as motor vehicles and subject to the same legal requirements, such as:

- Licensing
- Registration
- Road Rules
- Drink/ Drug driving laws
- Safety standards

Most e-scooters/ e-skateboards do not have number plates, speedometers, signals or warning devices and don't always have visible rear lights so they can't be registered.

WHAT HAPPENS IF I'M STOPPED BY POLICE?

The Road Safety Act allows police to stop riders and require them to state their name and address, as well as enforce the applicable laws.

Victoria Police has the power to impound these vehicles and to issue on-the-spot fines for offences including:

- Unlicensed riding
- Unregistered vehicle
- Driving on a footpath
- Failing to wear a helmet
- Drink/ drug driving
- Careless riding

THE VICTORIAN GOVERNMENT AND SELECTED COUNCILS ARE PLANNING AN E-SCOOTER RIDE SHARE TRIAL FOR LATER IN 2021. WATCH FOR UPDATES.



VICTORIA POLICE





OPEN STUDIO AND ART SALE

Rodney Arts Inc has been part of the fabric of Tatura and the surrounding district for well over 40 years. It has had many incarnations and the current Tatura Creative Arts Group, which includes members from Tatura, Rushworth, Kialla, Mooroopna and Shepparton, is a vibrant group of people who meet each Thursday morning at The Mechanics Hall in Hogan Street to enjoy each other's company whilst engaging in a wide variety of artistic pursuits. Each member is free to complete their own art and craft works or engage in the workshops, outings and collaborative projects which are offered regularly. Some of these workshops have included watercolour painting, mosaics, acrylic pouring, felting, silk paper making, silk dyeing, blown ink art, collage, life drawing and coat hanger decorating plus our annual Christmas window to name a few.

It is a great place to get encouragement and honest and supportive critique as well as to learn new skills.

In the past couple of years, during covid shutdowns, members would email each other with a weekly or monthly challenge or idea just to keep each other motivated. When lockdowns eventually ended each member was given a canvas and asked to do an art work depicting something of "Tatura".

This has resulted in a small collection of diverse works that will be on show when their sale and open workshop is held.

There will be plenty of their works on display and many arts and craft works, both large and small, for sale just in time for Christmas as they are holding their Open Workshop and Sale on Saturday and Sunday November 19th & 20th from 10.00am to 4.00pm each day.

If you need assistance

**Murchison
Flood Recovery Centre**

at Neighbourhood House Murchison
23 Impey Street | 5826 2373

- Food Care Packs
- Material Aid and Support
- Information from Council
- Assistance with Emergency Relief Grants

If you've been affected by the recent floods, Neighbourhood House Murchison can help. We can provide assistance with emergency relief grants, information about various services and whom to talk to, and food and material support. Generous people from the community - and from organisations all over Victoria - have donated loads and loads of clothing, blankets, toiletries, cleaning products, hygiene products and much more, and it's available for those in need.

Get in touch with Louis on 03 5826 2373 or at manager@murchison.org.au if you need anything.

BOLTON ESTATE AGENTS

**If you're thinking of selling
your property.**

**Please call Chris Bolton on
0413 092 698**

**Murchison's only local
Estate Agent**

BOLTON ESTATE AGENTS

NEW EXCITING POWER SAVING BONUS PROGRAM FROM 1 JULY 2022

As you all might be aware of by now, Premier Dan Andrews recently announced a \$250 million funding package to help ease cost of living pressures for Victorian households.

From 1 July 2022, a new \$250 payment will be open to all Victorian households who use the Victorian Energy Compare website to compare their energy deal and seek out a better price.

This new program will be open to all households, and concession card holders who previously received the bonus will be able to apply for it again.

Just over 220 Neighbourhood Houses are currently participating in the Power Saving Bonus outreach program, facilitated by Neighbourhood Houses Victoria and Good Shepherd in partnership with the Department of Environment, Water, Land and Planning (DELWP).

MURCHISON RETIREMENT VILLAGE INC- WYBALENA VILLAGE **OUR MOTTO IS: LIVE LOCAL, RETIRE LOCAL AND REMAIN LOCAL.**

A BIG SPECIAL THANKYOU
Murchison flood challenges

A big thank you to everyone for all that you did to protect and support all of us. Where do you start to thank those involved as there were so many that went above and beyond ?

CFA + SES + Police + all those locals and out of towners who helped to sandbag + the army and other defence support + the Dhurringile prisoner support + Shepparton Council + utility providers + local traders too - this was a true team effort and shows that when things get tough everyone rolls up their sleeves and gets in and gets the job done.

A big Pat on the back to you all for a job well done.

Thanks - Rodney Harrison



MURCHISON FIRE BRIGADE CFA

BY BOB LANGFORD

THE TIME THE TOWN CAME TOGETHER

As we residents know, Murchison has only recently experienced the second highest flood on record. We weren't to know that as the flood approached but I have tried to set out the Murchison Fire Brigade CFA's part in the joint defence of the town.

Our own CFA position as an Emergency Service was quite clear, support VICSES as the lead Agency in matters of flood disaster. Immediately the potential magnitude of the flood impact was understood our Murchison CFA Brigade Captain Thaniel Meyer contacted SES Murchison Unit Controller Steve Addison to offer them full support. Matters to combat and lessen town impact were then discussed and put into effect.

On Friday 14th Oct Sky's Caravan Park on the Low Road, Murchison East was severely impacted by rapidly rising water and all available Murchison CFA Members were called in to attend a briefing at the SES HQ where they were informed that an Evacuation Notice had been issued for the Township. Emergency Service Members were then split into teams to doornock and advise all residents of the situation.

With the floodwater rising at an alarming rate plans were put into effect to safeguard the town and Emergency Service Volunteers supported by residents (in some cases with their children and families) and Australian Defence Force Personnel commenced filling and placing sandbags around the towns threatened areas and their own homes. First action for Emergency Services was blockage of the low lying storm water drains along Stevenson Street to prevent the backflow of rising river water into the town and the construction of a temporary flood levee to contain any breach of the river bank. CFA pumping units were placed at strategic points to return any water ingress to the river. CFA pumping units were also placed in several locations at the request of Goulburn Valley Water to prevent a back up of water in the town drainage system. All pumping units were manned by CFA on a rotating shift 24hr basis so as to respond to changes in circumstance.

At this time, it was noticed that several sections of the High Road approach to the Murchison Bridge from the East had developed blisters, potholing and other surface deterioration. The decision was then made to close High Road and bridge to vehicular traffic for safety reasons. This decision was not taken lightly as the bridge and road forms part of an arterial road system as well as connecting the two parts of Murchison but the structure was deemed to be unsafe (pending expert evaluation). 'Road Closed' notices and barriers were erected on both sides, at the town side of the bridge and in the East at the Violet Town Road/Wahring Road junction until more permanent barriers could be erected during the following days. These notices but were often ignored by many drivers resulting in Emergency Services advising drivers to seek an alternative route.

A power outage at this time compounded the difficulty as floodwater had entered the PowerCorp electrical sub-station at Mooroopna causing damage. Forecasts of the power outage extending for up to 5 days had CFA and SES working off portable generators and a CFA initiative was to supply a Community Mobile Phone charging board at the Fire Station. It was noted that some enterprising residents also used this facility to heat their hot water boilers. Mobile communications were also disrupted at this time which added to the list of items to sort out.

A fully self-contained ADF refuelling unit visited the town on Monday 17th topping up emergency service vehicles and ensuring enough supply to run pumps and generators. A big thank you to ADF as Murchison was at that time cut off from all other towns.

After the flood peak had passed, the river level being hourly monitored by CFA, Emergency Services could breathe a little easier and it was good to see the emergence of those officials offering support and assistance to those unfortunate individuals that had been affected by the flood waters. CFA was then able to then direct relief enquiries to the Murchison Flood Recovery Centre at the Neighbourhood House. Also with river levels dropping CFA were able to send a pumping unit up to the PowerCorp Mooroopna Sub Station to assist in further flood clearance operations.

CFA were also pleased to host a team of specialist Relief and Recovery experts from their highly trained Community Engagement team at Headquarters. These individuals doornocked a number of affected residents to discuss their problem, offering advice and also held open passer-by workshops in the main street outside the bakery.

These Members weren't local but came from as far away as Churchill, Morwell and the Mornington Peninsula. A typical example of the Emergency Services 'can do everything to help' approach.

Now the event is over and hopefully with those residents affected being able to return to normal we might reflect on what might have been if the residents and emergency services had not pulled together with a common goal. Murchison CFA has been proud to work alongside such a community in its time of trial and will continue to do so. I could not close this article without mentioning the tireless work and ethic of the following individuals, SES Unit Controller Steve Addison, our local VICPOL Member Leading Senior Constable Rick Keast and other colleagues from the Tatura station, Louis Bowden at the Murchison Neighbourhood House and our CFA Captain Thaniel Meyer and his team. Also Goldie, Mitch and Amelia in the Railway Hotel Murchison East, Maddie and Brian at the Bowls Club, Janine at the Murchison Bakery, Glynis at the Supermarket, Glen at the Servo. Undoubtedly there will be others and I apologise for any omission but their consideration of and support for tired Emergency Service workers cannot be thanked enough.

The remarkable resilience shown by the residents of and visitors alike has shown the community spirit that exists in our small town. This is something we should all be proud of.

One aspect of CFA involvement was the monitoring of flood levels (mentioned briefly above) and with these being related to town events when collated will leave a historical record useful to Emergency Services to combat future events of this nature.

FLOODS TO FIRES.

Despite current weather conditions we need to look ahead to 'that time' of the year. Floods to fires in a very short space of time and consider the consequences of the current vegetation overload drying out. CFA urge residents to plan and prepare for this season which will start later but has the potential to last longer into next autumn.

As we do move into the summer season with its emphasis on bushfire safety please do not neglect home fire safety. This is not a seasonal threat but is with us year round. Think of this, a fire inside can often spread outside and with unforeseen and extended consequences. CFA will continue to promulgate fire safety at all levels. Please stay safe and act responsibly. Always consider the consequences of your actions and the affect on others.

MURCHISON CFA JUNIORS

CFA run a Juniors training program with the emphasis on teamwork, character building and self reliance with many activities being of a social and adventure based nature. Children between the ages of 11 and 15 are welcome to join. For further information catch Bec Catania or Sharon Reilly at the Murchison Fire Station on a Sunday morning.

Should members of the public have anything they would wish to discuss with CFA Murchison Fire Station is manned for maintenance purposes on Sunday mornings. Call in and chat with the crew.

EMERGENCIES - Please do not call CFA but dial 000 and wait for your call to be answered. Speak slowly and distinctly with the reason for your call. Emergency Services will be activated immediately to assist.

MURCHISON SELF-SERVE LIBRARY LOCKER IS OPEN!



goulburn
valley
libraries



The people of Murchison and district will now be able to search the library catalogue, and collect and return books, DVD's and magazines at their very own Library Locker.

Goulburn Valley Libraries has installed a self-service Library Locker at the Murchison Heritage Centre.

Goulburn Valley Libraries CEO, Mr Kevin Preece said, "Murchison is one of the busiest stops for our Mobile Library, but only gets a visit once a week for a couple of hours at a time. We have used the money to buy a self-service locker that will be located on the car park side of the Heritage Centre building, adjacent to the Mobile Library stop."

The Library Locker will be available 24 hours a day every day and is located on the car park side of the Heritage Centre building, adjacent to the Mobile Library stop. Library members will be able to search the library catalogue and order and place reservations for books, DVDs magazines and audiobooks at the locker.

Fleur McDonald visits Shepparton Library to celebrate the launch of Broad River Station.

The Shepparton Library welcomes author Fleur McDonald at 6pm on Friday 18th November as she celebrates the launch of her 20th novel Broad River Station.

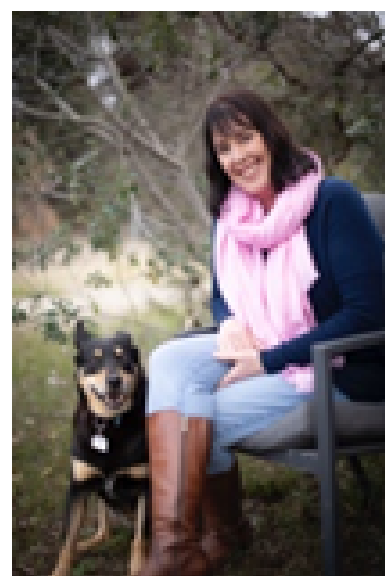
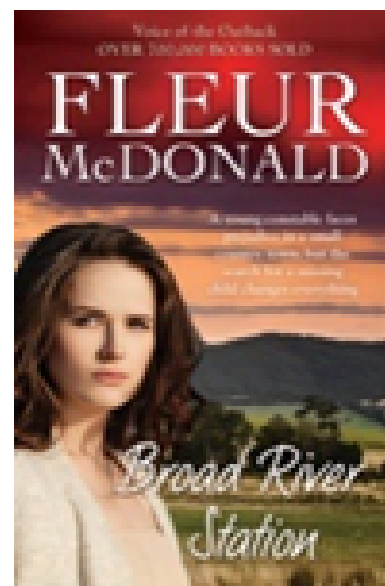
Having sold over 700,000 copies of her books, Fleur McDonald has solidified her position as one of the country's favourite storytellers.

Fleur has lived and worked on farms for much of her life. After growing up in the small town of Orroroo in South Australia, she became a jillaroo before spending twenty years farming 8000 acres east of Esperance, WA.

Fleur likes to write about strong women overcoming adversity, drawing inspiration from her own experiences in rural Australia. She is the best-selling author of the Detective Dave Burrows series as well as Red Dust, Blue Skies, Purple Roads, Silver Clouds, Crimson Dawn, Emerald Springs, Indigo Storm, Sapphire Falls, The Missing Pieces of Us, The Shearer's Wife and Rising Dust, as well as the ebook exclusive If You Were Here. Fleur has also published two children's books.

Broad River Station is the story of a young constable who faces prejudice in a small country town, but the search for a missing child changes everything. It is a breathtaking novel of rural suspense from the bestselling Voice of the Outback.

Contact Goulburn Valley Libraries on 1300 374 765, email shepparton@gvlibraries.com.au or book via Eventbrite at <https://fleurmcdonaldsheppartonlibrary.eventbrite.com.au>





MURCHISON MEN'S SHED INC

INC No. A01097471; ABN 47749064930; ATO, DGR

23 Impey Street Murchison Vic 3610

Values: Respect, Honesty, Inclusiveness, Community Focused, Integrity

The last few weeks have been both exciting and frustrating. We watched the walls slowly going up on the new shed, then the roof. But unfortunately delays with materials, unavailability of workers and then the rains came. More rain and then the flood and that's where the shed is at.

We don't know when the shed will be completed which now could be some time away, possibly in the new year, but the morale of the guys is still high.

The recent flooding in Murchison has shown the wonderful work of the local CFA and SES volunteers, supported by members of defence force and help from locals supporting each other with sand bagging in the town. You all showed once again that Murchison is such a great Community.

We held our AGM on Saturday 22nd October and the following office bearers were elected.

- President: Dennis McCullagh 0428148210
- Secretary: Con Scarvelis 0468786454 or 0421525665
- Treasurer: Bob Maitland 0407324535
- Welfare Officer: Frank Mattea 0474769919
- Shed Co-ordinator: Ian Tavener 0421250170
- Committee member: Rob Cornelious
- Committee member: James Wood

In the near future, we will be canvassing for new members, and if the situation warrants it, with new membership growing we are looking at opening on Saturdays for those who are still in the workforce or busy during the week.

If you are interested in being a member, join us at 23 Impey Street, Murchison, for a cuppa, biscuit or a piece of cake that one of our members have made. We do spend a lot of time just having a chat.

Contact

Dennis McCullagh (President) on 0428 148 210 or at murchisonmensshed@gmail.com

Con Scarvelis (Secretary) on 0421 525 665 or at conscar2019@gmail.com



Help us reduce waste
Pick up some

FREE FRUIT



MURCHISON COMMUNITY Walking Groups ALL WELCOME



Meet at the Neighbourhood House
23 Impey Street, Murchison



Followed by barista made coffee
and a homemade slice at the
Neighbourhood House Coffee Hub

Do you like arts and crafts?
Are you interested in sewing?

Come join the fun
at the

Murchison Community

SEWING GROUP

at the Neighbourhood House

Fridays
11am - 2pm



A Program of
Neighbourhood House
Murchison (VIC) Inc.

23 Impey Street
03 5826 2373
info@murchison.org.au



Do you play an instrument? Do you sing?
Are you looking for people to play with?
Do you wanna learn and practice music skills?

Come join us at the

Murchison

Community

JAM SESSION!

Every Friday, 10 - 11am

At the Neighbourhood House
23 Impey Street

A Program of
Neighbourhood House
Murchison (VIC) Inc.

23 Impey Street
03 5826 2373
info@murchison.org.au

